



Curing Iowa's Pipe Problems

Evaluate-Maintain-Rehabilitate-Sustain

Toll Free - (855) 99 NO DIG

**530 Dubois Avenue - McCallsburg, IA 50154
Office - 515-434-2248 - Fax - 515-434-2249**

www.centraliowatelevising.com



Central Iowa Televising is a family owned business located in the heart of Iowa. We value our long lasting relationships with Municipalities, Engineers and Contractors throughout the state and strive to provide them with the most value driven, accurate results in the most efficient manner. Cleaning, Televising and Rehabilitating problem areas in sewer collection systems of all sizes is part of our everyday routine. Knowing that every system is unique, CIT can utilize multiple methods of identifying I&I at the source and provide you with long lasting, No-Dig CIPP repair solutions. Locating the sources of I&I can be time consuming and tricky, having the right tools, experience and techniques is a great advantage that CIT has to offer. Our Services include:

- NASSCO Certified inspections of manholes, mainlines and laterals.
- Lateral launch inspections and cleaning from mainline
- Pipe locating services for mainlines and laterals
- Root cutting (mainline & lateral), tap removal and hard deposit removal.
- Heavy cleaning, lift station cleaning, brine tank cleaning, storm sewer intake and specialty tank and pit cleaning.
- Rainfall simulation flood testing, smoke testing, dye water testing and footing tile testing.
- Collection system evaluations, GIS integration and rehabilitation recommendations.
- CIT employees receive extensive safety and on the job training. Certifications include: confined space entry and rescue, CPR training & certification, NASSCO PACP, MACP and LACP certifications.
- CIPP spot repairs and sectional repairs for mainlines, connections and laterals.



Toll Free - (855) 99 NO DIG
530 Dubois Avenue - McCallsburg, IA 50154
Office - 515-434-2248 - Fax - 515-434-2249
www.centraliowatelevising.com

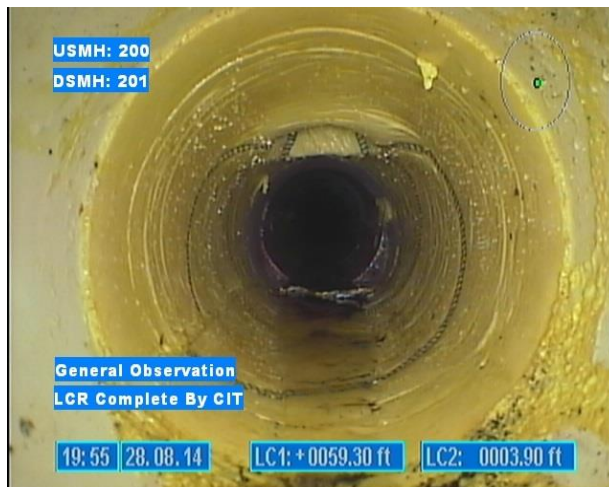


CIPP Division

Curing Iowa's Pipe Problems

The CIPP repairs offered by CIT will help eliminate infiltration at the source, seal leaky joints, repair broken pipe, smooth transition of offset joints, seal lateral connections or eliminate unwanted connections. Utilizing a silicate resin with zero shrinkage, and providing a tensile strength that is 3 times stronger than PVC pipe! CIT can help you get ahead of sewer problems at a fraction of the cost of conventional methods while providing you with a maintenance free, long lasting repair.

Lateral Connection Repair



Pipe Patch



What people are saying:

Shane,

I wanted to say thanks for the CIPP spot repair work your crews did last summer. Those 2 small repairs have lowered the average inflow to our system by approximately 30,000 gallons per day (I can't even guess how much it will help during our wet season). That, in addition to the water main break your crew found during televising combined has reduced our total inflow by almost 100,000 gpd (almost 1/3). Thanks again, I look forward to working with CIT in the future.

Bob Rhone
Public Works Director
Colfax, IA

Toll Free - (855) 99 NO DIG
530 Dubois Avenue - McCallsburg, IA 50154
Office - 515-434-2248 - Fax - 515-434-2249
www.centraliowatelevising.com



AVERAGE TENSILE STRENGTH: 24,500 psi
AVERAGE FLEXURAL STRENGTH: 27,500 psi
AVERAGE FLEXURAL MODULUS: 1,345,000 psi



Before Repair



Pre-measured resin bag



Spreading mixed resin



Wrapping PipePatch onto packer



After Repair

TECHNICAL DATA

- Odorless and ideal for working in confined spaces
- Outstanding bonding properties to most materials
- Resistance to 63+ chemicals and oils
- Non-flammable, making it ideal for hotels, airports, hospitals, etc.
- Non-hazardous, so no transport or disposal problems
- Resin cures in the presence of water
- Structural properties exceed the minimum requirements of ASTM F 1216

ENVIRONMENTALLY SAFE

- PipePatch contains no VOCs or Styrenes
- Safe for storm and sanitary sewers
- PipePatch resin does not get hot
- Maximum temperature may reach 105° F
- Safe to touch and safe on packers

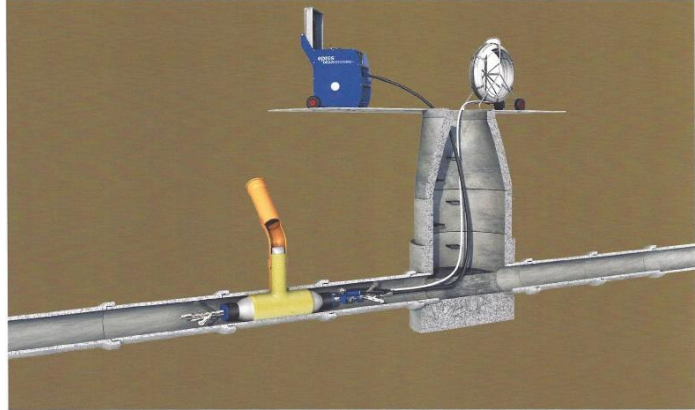
APPLICATION ADVANTAGES

- Available to repair 2" - 24" diameter pipe in 24" and 48" lengths
- Flow-thru packers prevent backups during repairs
- No more costly, disruptive and time consuming excavations
- No more road closures or traffic back ups during repairs
- Only standard sewer cleaning and inspection equipment required
- Small repair crews - as few as 1 to 3 people
- Short repair times - several can be done in one day
- Field tested for over 10 years with a durable 50 year repair life

Toll Free - (855) 99 NO DIG
530 Dubois Avenue - McCallsburg, IA 50154
Office - 515-434-2248 - Fax - 515-434-2249
www.centraliowatelevising.com



EPROS Lateral Connection Repair



Lateral Connections – A major contributor of Infiltration and Root Intrusion!

ASTM standards acknowledge that mainline liners are not water tight once cut to make a lateral connection with a house or business. Water and roots will follow the path of least resistance between the liner and host pipe to the opened lateral connection.

Sealing the Lateral Connection and the first joint is now a key component of systematic mainline rehabilitation programs. Typically eliminating from 50% up to 90% of private source infiltration without lining the entire lateral.

No Digging - No Disruptions - No Homeowner Involvement

Trelleborg Pipe Seals is a world leader developing innovative technologies for the upkeep of sewer collection systems. The brand name EPROS Drain Systems stands for 20 years of experience, continuous research and further development of technical systems for modern trenchless repair of pipelines in sewer systems, buildings and industries. The EPROS LCR system is both a pipe repair device and a method for the lateral connection repair (house lateral connections) of main pipes in public infrastructure networks. It repairs and permanently seals main/lateral interfaces and lateral connections by installing either a LCR-S hat profile or an LCR-S full wrap liner from the main pipe.



Sizes available:

- Mainline Diameters: 6", 8", 10" and 12"
- Lateral Diameters: 4", 6" and 8"
- Lateral Angles: 45 or 90 degree
- Lateral Insertion Length: 1" to 24"

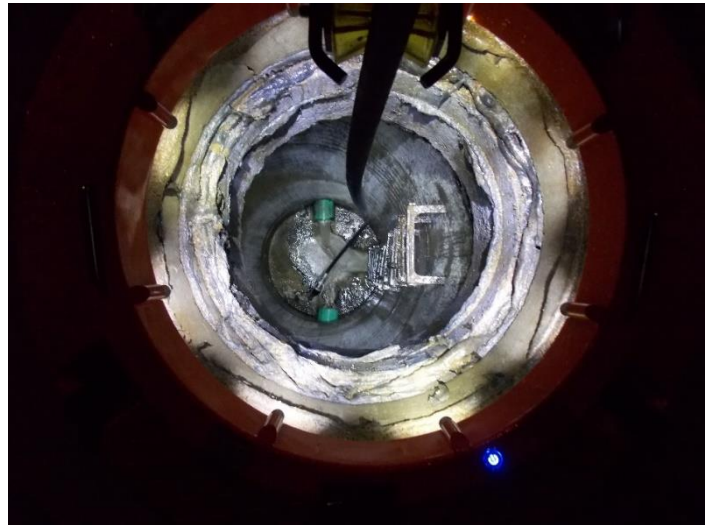
Toll Free – (855) 99 NO DIG

530 Dubois Avenue – McCallsburg, IA 50154

Office - 515-434-2248 - Fax - 515-434-2249

www.centraliowatelevising.com

The *Light Ring* is a 'State of the Art' tool-set designed specifically to fit manholes. Invented in the field to help employees work more efficiently, save employers countless man hours, extend sewer equipment longevity, and Increase overall manhole safety.



Benefits include:

- **Increased Efficiency**
- **Increased equipment longevity**
- **Safer confined Space Entry**
- **Assist of Personnel Rescue**
- **Nighttime Security**
- **Lower Payroll Costs**
- **Fast Transportation**
- **Durability & Reliability**



Toll Free (877) 941-2833
530 Dubois Avenue - McCallsburg, IA 50154
Office - 515-434-2248 - Fax - 515-434-2249
www.lightringinc.com